

# SEAMLESS CONNECTIVITY FOR A BETTER NETWORK >

Molex Connected Enterprise Solutions

**molex**



---

## MOLEX CONNECTED ENTERPRISE SOLUTIONS

A pioneer of structured cabling and high-speed data technologies, Molex provides a comprehensive portfolio of copper and fiber structured cabling solutions.

---



## REACH EVERY CORNER

With more than three decades of experience delivering enterprise network solutions for some of the largest organizations in the world, Molex Structured Cabling delivers maximum performance, efficiency, reliability and backed by a 25-year warranty.





# 700 LOCATIONS IN 40 COUNTRIES >

## **Molex Connected Enterprise Solutions**

Portsmouth, UK

Chicago, USA

Warsaw, Poland

Shanghai, China

Bangalore, India

Johannesburg, South Africa

Melbourne, Australia

Moscow, Russia

**molex**





**45,000 PEOPLE  
FUELLING  
INNOVATION >**

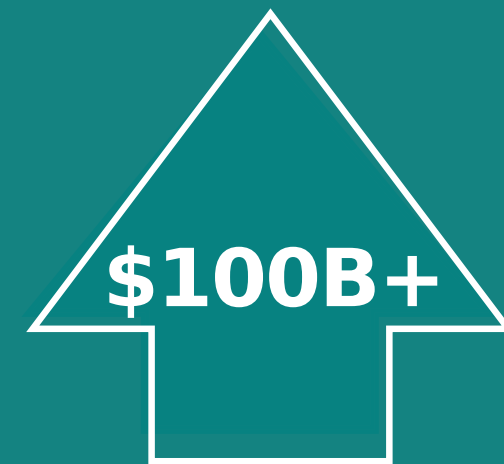
**molex**



# THE STRENGTH OF KOCH



Of earnings reinvested  
in the company



Annual Revenue

# SOLUTIONS WITH STAYING POWER >

Molex provides a comprehensive portfolio of copper and fiber structured cabling solutions that are customized to ensure they meet your exact enterprise needs, from industry 4.0 and smart building upgrades to high-performance networks and 5G. Our products and solutions are also backed by a comprehensive 25-year system performance warranty when installed by a Molex certified partner, giving you peace of mind that our structured cabling will support your needs over the long term.



## FUTURE READY INFRASTRUCTURE

Prepare your data center for future demand created by advancements such as IoT, 5G and Industrial 4.0 with our enterprise cabling solutions designed for long-lasting performance in demanding, high-density environments. By delivering power saving IP connectivity to native digital devices and legacy systems, and because our solutions are optimized for high-speed data transmission and premise edge networking, you can ensure seamless high-bandwidth connectivity across your operations.



## SMART BUILDINGS

Molex CoreSync platform enables smart buildings and smart campuses, orchestrating disparate building systems like LED lighting, meeting room management, audio-visual, powered shades and building automation systems. CoreSync systems include a 10-year warranty when designed and installed by a Molex CoreSync certified company.



# REACH EVERY CORNER >

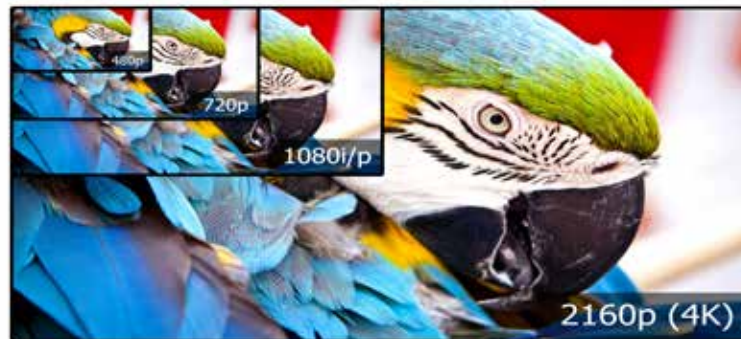
## COMBINING DATA WITH POWER

- Power over Ethernet (PoE) uses wired Ethernet networks to transmit power and data through one cable
- DC power to IP-enabled devices, including lighting, sensors, cameras
- Quick, safe and simple to install



## HD BASE-T

- One cable solution
- Transmission of HD to 4K video, audio, ethernet, controls, USB, with power
- Ideal for the broadcast market found in education, hospitality and hospitals
- Meets the HD Base-T Alliance standards



## HIGH SPEED ETHERNET

- End-to-end unshielded & shielded
- Superior performance with U/FTP
- Supports 10 GbE (10GBase -T)
- Superior alien crosstalk suppression
- Supports 500 MHz transmission for Cat 6A



# CONNECTED SOLUTIONS



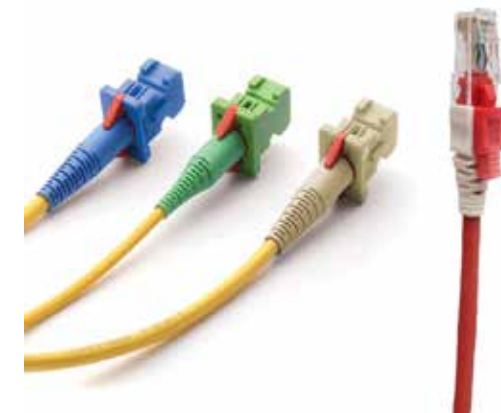
## INTELLIGENT PANEL SOLUTIONS

- Your infrastructure management
- OS2, OM3, OM4, OM5 support
- Cat 6 UTP, Shielded Cat 6A FTP



## COPPER – DATAGATE JACK

- Category 5E, 6, 6A
- Unique shutter design for dust protection, and patch cord alignment
- Patented highly durable contacts reduce termination wear



## LOCKING PATCH CORDS

- Ideal for environments with sensitive applications
- Preventing unauthorized changes
- Once connected, removal only through a specially designed key
- Optical and category 6 options



# YOUR HIGH SPEED CHANNEL SIMPLY SOLVED >

## PON

- Passive Optical Networks
- Reduced equipment enabling one single feeding fiber to serve multiple homes and businesses applications
- Lower maintenance requirements
- More bandwidth, delivered more efficiently



## MULTI FUNCTION ENCLOSURE

- Ideal for high density fiber applications
- 96 optical fiber / 24 copper connectors per 1U
- Designed for 10G/40G/100G system migration
- Rack mounted, wall-mounted or consolidation point



## OPTICAL FIBER

- Complete fiber solution capability - single / multi mode
- OM3/4/5 transmission of 10-100G,
- Single mode migration options up to 400Gbps
- Extended maximum link lengths
- Reduces fiber count up to 75%







# FOCUS ON SERVICE >

Our team works to understand your specific challenges, to help you configure a structured cable solution designed for your specific enterprise requirements. We're ready to field any questions you have regarding your products and offer training to help you get the most out of your enterprise solutions.

**molex**



## CONNECTING A GREENER, BRIGHTER NETWORK

At Molex we are committed to using environmentally conscious practices during the design and manufacture of our products. All our processes and policies are in place to minimize environmental impact and maintain compliance with environmental regulations.



## CORPORATE CITIZENS

In addition to the basic expectation of compliance with legal, company and customer requirements, our ECO CARE policy requires us to continuously identify and address risks to human health and the environment.







# molex

---

## Dependable Solutions for Demanding Environments

Your enterprise has connectivity needs unique to your market. Overcome these connectivity challenges today and capture future opportunity with our flexible, high-performance networking solutions and deep market expertise.

---

Learn more  
about Molex

[molexces.com](https://molexces.com)